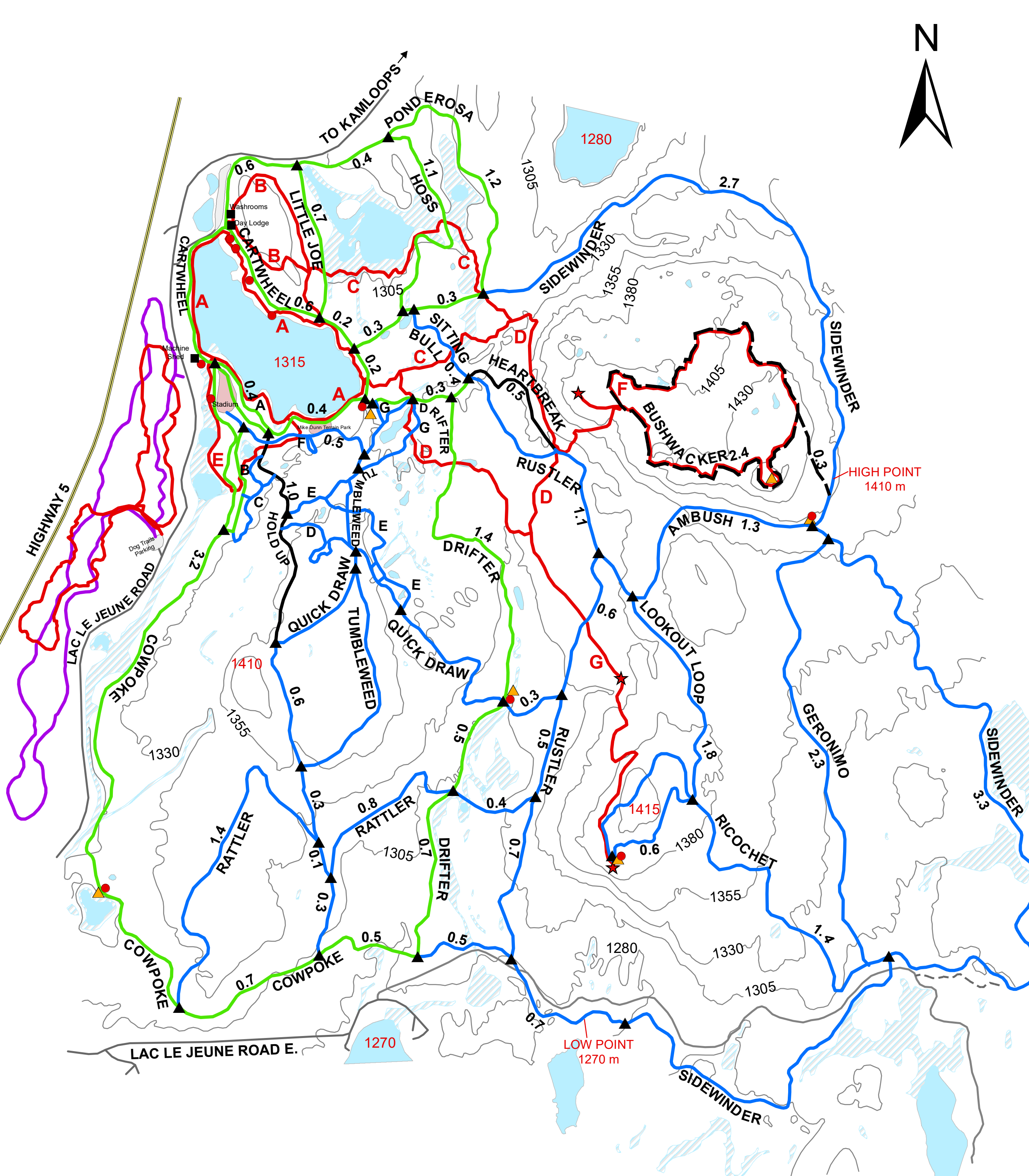


Stake Lake Ski & Snowshoe Trails



Legend

- Building
- Toilet
- ▲ Ski Trail Map
- ▲ Shelter
- ★ Lookout
- Backcountry Trail (not track set)
- Advanced Trail
- Intermediate Trail
- Novice Trail
- Dog Trail
- Snowshoe Trail

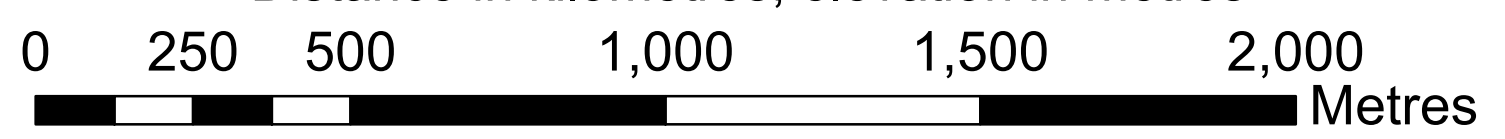
Skiing:

- CARTWHEEL 2.6 km
- COWPOKE 4.8 km
- DRIFTER 3.0 km
- HOSS 1.1 km
- LITTLE JOE 0.6 km
- PONDEROSA 2.8 km
- A RAWHIDE 0.2 km
- B OUTLAW 0.3 km
- AMBUSH 1.2 km
- GERONIMO 2.2 km
- LOOKOUT LOOP 2.4 km
- QUICK DRAW 2.0 km
- RATTLER 2.9 km
- RICOCHET 1.4 km
- RUSTLER 3.0 km
- SIDEWINDER 8.7 km
- SITTING BULL 0.5 km
- TUMBLEWEED 2.4 km
- C BRONCO 0.5 km
- D SNAKEBITE 0.5 km
- E SHOWDOWN 0.7 km
- F ELDORADO 0.7 km
- G LASSO 0.6 km
- ◆ BUSHWACKER 2.7 km
- ◆ HEARTBREAK 0.5 km
- ◆ HOLDUP 1.7 km

Snowshoeing:

- A LAKE 2.1 km
- B GIANT FIR 1.2 km
- C MARSH 1.6 km
- D BASALT BLUFFS 2.1 km
- E STADIUM 0.9 km
- F BUSHWACKER 2.5 km
- G VISTA 1.2 km

Distance in kilometres, elevation in metres



EMERGENCY PHONE

December to March
call Trails Ticket Booth
(250) 372-5514

April to November call 911

EMERGENCY LOCATOR NUMBERS

Use the number at each trail junction
to help staff locate you in an
emergency



Map updated Mar 2017